

COMPANY PROFILE

Contact us

By leveraging a wide range of materials and our proprietary technologies, we offer proposals that contribute to total cost reduction.
Please feel free to contact us for more information.

 **+81-3-6912-9232**

 **+81-3-5391-0051**



<https://www.tokkin.com>

TOKKIN
TOKUSHU KINZOKU EXCEL

A Message from the CEO



Believing in the infinite possibilities of metal materials, TOKKIN continues to take on challenges to help Customers the winners of the market.

Since our founding in 1940, TOKKIN has helped customers realize their technology dreams while adapting to changes in economic conditions and technological evolution. In order for our customers to be market winners, we have been constantly refining our technology, creating value, and providing various kinds of custom-made metal materials according to customer requirements.

- We have never allowed compromises from materials to equipment, with believing in the infinite possibilities of metal materials.
- We have continued to challenge ourselves every day to make our customers the winners of the market.
- We have turned around and found that there were irreplaceable friends there, when we were about to give up on the limit.
- We have supported protecting people's lives and enriching people's lives by providing various types of metal materials.

These are our joy as well as our raison d'être, why we continue to take on challenges.

Advancement of technology, such as the progress of digitalization, the domain expansion of the electronic device, and the transition to a sustainable society, has given us many chances to challenge ourselves in a wider range of industries and global markets. We will continue to strive to create something more amazing, and special customer value for future possibilities, and aim to be an excellent company that will continue for 100 years.

Representative Director & CEO

J. Taniguchi

Philosophy

Mission

TOKKIN provides high-functional materials to the world with our outstanding manufacturing techniques.

Vision

**TOKKIN makes technology dreams come true.
— Make everything more “interesting” —**

Values

TOKKIN creates the best earnestly.

TOKKIN keeps promises.

TOKKIN takes actions right away.

TOKKIN thinks freely and innovatively.

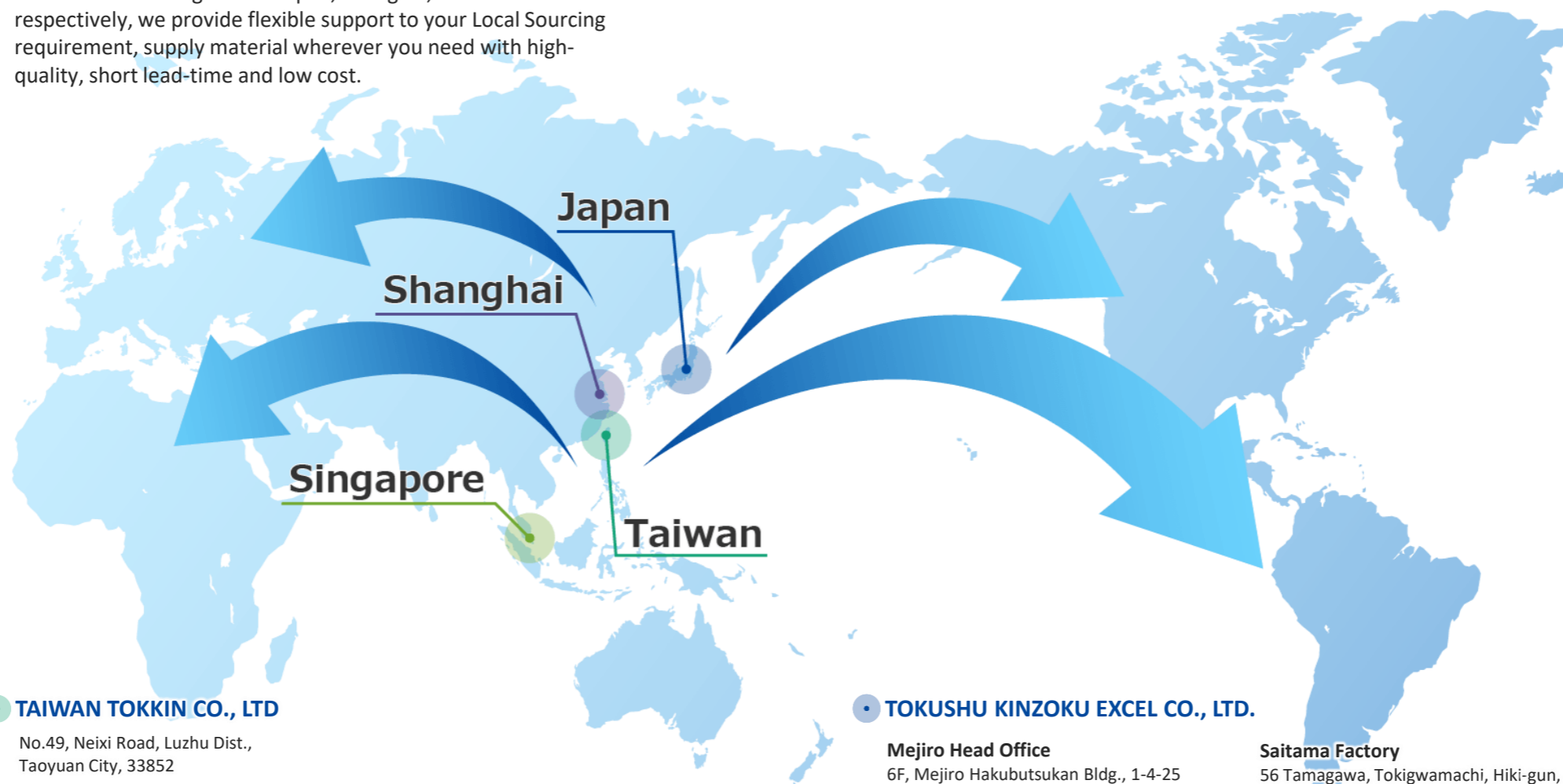
TOKKIN develops human resources.



TOKKIN Global Network-Connecting the World through Quality and Reliability.

We supply EU RoHS-complaints Product

With manufacturing sites in Japan, Shanghai, and Taiwan respectively, we provide flexible support to your Local Sourcing requirement, supply material wherever you need with high-quality, short lead-time and low cost.



• **TAIWAN TOKKIN CO., LTD**

No.49, Neixi Road, Luzhu Dist.,
Taoyuan City, 33852
TEL +886-3-324-4601
FAX +886-3-324-4471

• **TOKUSHU KINZOKU EXCEL CO., LTD.**

Mejiro Head Office

6F, Mejiro Hakubutsukan Bldg., 1-4-25
Mejiro, Toshima-ku, Tokyo 171-0031,
Japan
TEL +81-3-6912-9232 (English)
TEL +81-3-5391-6151 (Japanese)
FAX +81-3-5391-0051

Saitama Factory

56 Tamagawa, Tokigwamachi, Hiki-gun,
Saitama 335-0342, Japan
TEL +81-493-65-1543
FAX +81-493-65-3578

• **SHANGHAI TOKKIN CO., LTD.**

No.522 Jinxi Road, Songjiang Economic &
Technological Development Zone,
Shanghai, 201613
TEL +86-21-5774-3433
FAX +86-21-5774-3010

• **SHANGHAI XIYIN COMPOSITE MATERIALS CO., LTD**

No.522 Jinxi Road, Songjiang Economic &
Technological Development Zone,
Shanghai, 201613
TEL +86-21-6774-1997
FAX +86-21-6774-1996

• **TOKKIN SINGAPORE PTE. LTD.**

10 Collyer Quay, #40-08, Ocean Financial Centre,
Singapore, 049315
TEL +65-6808-6348

Osaka Sales Office

No. 202, 2F Shin-Osaka Takamitsu Building,
5-3-4 Nishinakajima, Yodogawa-ku,
Osaka-shi, Osaka 532-0011, Japan
TEL +81-6-6195-2081
FAX +81-6-6195-2082

Nagano Sales Office, Nagano Factory

2113 Koaso, Ueda-shi, Nagano
386-1213, Japan
TEL +81-268-38-3855
FAX +81-268-38-4091

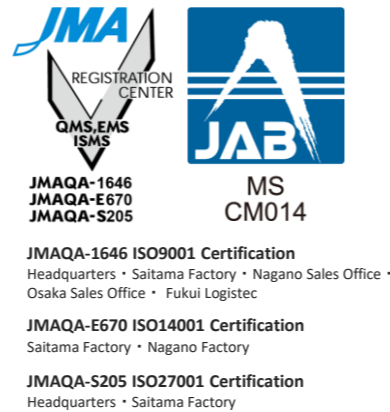
Tohoku Sales Office

3F Jozenji-dori Square Building, 3-1-11
Kokubun-cho, Aoba-ku Sendai-shi, Miyagi
980-002, Japan
TEL +81-22-398-5205
FAX +81-22-398-5206

Company Overview

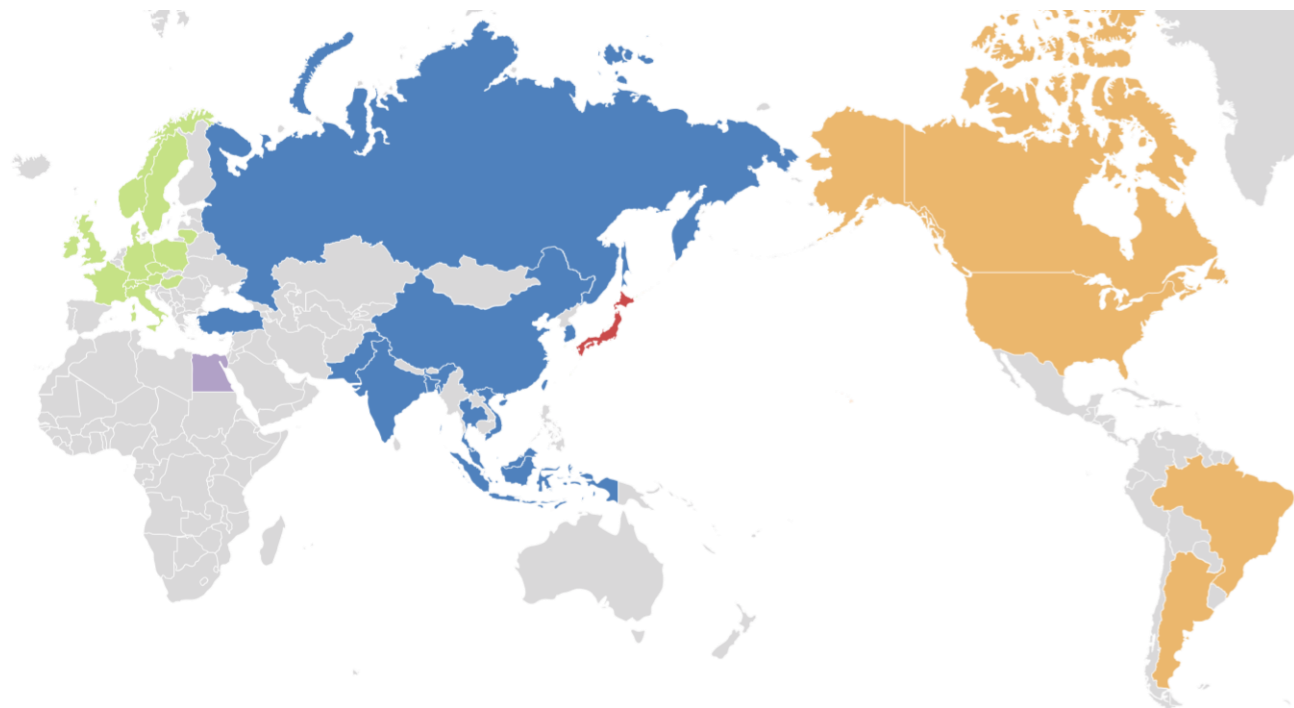
TOKKIN

Company Name	TOKUSHU KINZOKU EXCEL CO., LTD.
Representative Director & CEO	Tsuyoshi Taniguchi
President & COO	Tokujiro Mizutani
Establishment	January 2017 (Founded in May 1940)
Capital	JPY 100 million *TOKKIN HOLDINGS Corp. 100%
Business Description	Development, Manufacturing, Processing and Sales of Precision Metal Materials
Sales	JPY 6.77 billion (Consolidated Sales : 12 billion) *As of FY 2025
Employees	227 (Total Employees Including Group Companies : 351) *As of January 2026



Our Delivery Record

Leveraging our global network, we have a proven track record of delivering to 35 countries worldwide.



Europe	Middle East and Asia	North and South America	Others
Austria	Bangladesh	America	Egypt
Czech Republic	China	Argentina	
England	Hong Kong	Brazil	
France	India	Canada	
Germany	Indonesia		
Hungary	Japan		
Ireland	Malaysia		
Italy	Pakistan		
Lithuania	Qatar		
Luxembourg	Russia		
Norway	Singapore		
Poland	South Korea		
Sweden	Taiwan		
Switzerland	Thailand		
	Turkey		
	Vietnam		

Overseas Subsidiaries

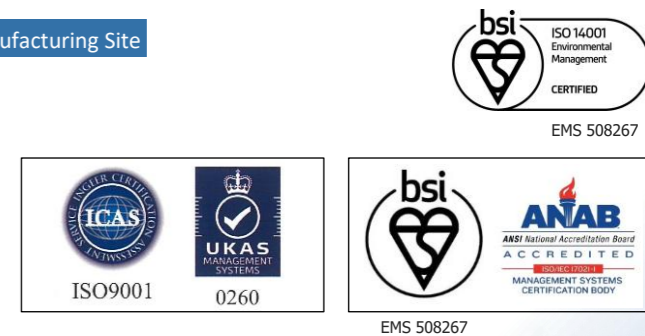
TAIWAN TOKKIN CO., LTD.	Manufacturing Site	Sales Office
Capital	TWD 73,000,000	
Employees	38	
Equity Stake	TOKUSHU KINZOKU EXCEL CO., LTD. 100%	
ISO	2006 Acquired ISO9001 certification 2011 Acquired ISO14001 certification	



SHANGHAI TOKKIN CO., LTD.	Manufacturing Site	Sales Office
Capital	USD 12,000,000	
Employees	74	
Equity Stake	TOKUSHU KINZOKU EXCEL CO., LTD. 80% TAIWAN TOKKIN CO.,LTD. 20%	
ISO	2003 Acquired ISO9001 certification 2006 Acquired ISO14001 certification	



SHANGHAI XIYIN COMPOSITE MATERIALS CO., LTD.	Manufacturing Site
Capital	USD 700,000
Employees	13
Equity Stake	TOKUSHU KINZOKU EXCEL CO., LTD. 100%
ISO	2016 Acquired ISO14001 certification 2024 Acquired ISO9001certification



TOKKIN SINGAPORE PTE. LTD.	Sales Office
Capital	USD 200,000
Employees	4
Equity Stake	TOKUSHU KINZOKU EXCEL CO., LTD. 100%

Affiliates

YK MATERIAL CO., LTD.	
Address	3-2-1 Kamomachi, Okaya City, Nagano 394-0003, Japan TEL +81-266-22-8645 FAX +81-266-22-8646
URL	https://www.yk-material.jp

TOKKIN HOLDINGS Corp.	
Address	6F, Mejiro Hakubutsukan Bldg., 1-4-25 Mejiro, Toshima-ku, Tokyo 171-0031, Japan TEL +81-3-5391-6101 FAX +81-3-5391-6102
URL	https://tokkin-holdings.co.jp

SAYA-NO-YUDOKORO CO., LTD. (Hot spring)	
Address	3-41-1 Maenochi, Itabashi-ku, Tokyo, 174-0063, Japan TEL +81-3-5916-3826 FAX +81-3-5916-3814
URL	https://www.sayanoyudokoro.co.jp

TOKKIN's material are everywhere around you, even though you can't see them!

Our materials are used in various applications, from daily life gadgets such as smart devices, PCs, automobiles, and game consoles to industrial equipment such as semiconductor manufacturing equipment, medical equipment, and textile machinery. Although our material is mostly invisible, it plays an indispensable role in the proper functioning of the product and its supporting components. High-performance materials only TOKKIN can produce, support the technologies that are created one after another behind the scenes.

Material Applications

ELECTRONICS

Vibration Motors, Camera Modules, FPC, Shield Cases, Tactile Switches and Membrane Switches, CPU/GPU Springs, Hinges, Suspension Springs, Resistors and Variable Resistors, Fuses, Connectors, Spiral Spring Gaskets, Electromagnetic Shields, Inductors, Temperature Sensors, Capacitors, Lead Frames, Antennas, E-Cigarettes



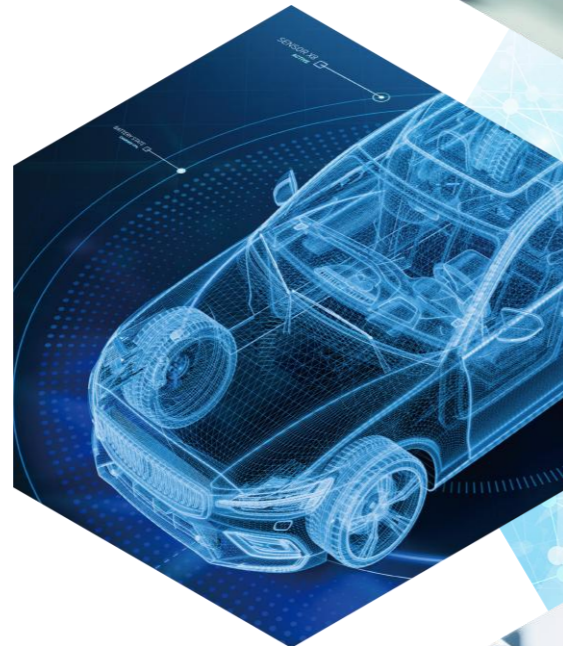
MEDICAL

Dental Instruments, Scalpel Blades, Syringe Needles, Indwelling Needles, Puncture Needles (lancets), Micro Pumps, Stents, Catheters, Implants



AUTOMOTIVE

Micro Motors, Seat Belt Springs, Steering Parts, Injectors, Oil Rings, Turbochargers, Fuel Cells, Battery Terminals, Electromagnetic Shields, Valves, Washers and Shims, Tire Mold Blades, Air Compressor Expansion Valves, Resistors



PRECISION EQUIPMENT

Springs, Watch parts, Camera Parts, Electromagnetic Shields, Diaphragms and Valves, Bellows, Thermal Protectors, Surge Absorbers



INDUSTRIAL

Semiconductor Manufacturing Equipment, Bellows, Diaphragms and Valves, Rupture Discs, Electrostatic Chucks, Steel Belts, Actuators, Chains, Heaters, Surface Heating Element, Knitting Needles, Knitting Related Parts



KNIVES/BLADES

Razor Blades, Razor Blades Guards, Cutter Blades, Thomson Blades, Pinnacle Blades, Doctor Blades, Thickness Gauges, Tape Measures



TOKKIN's Advantages

Various Materials

Stainless Steels, High Carbon Steels, Low Carbon Steels, High Performance Materials, Composite Metals, etc.

TOKKIN, independent from metal manufactures, enables flexible raw material sourcing. We provide custom made specification materials using our long-cultivated processing expertise. Committed to high quality, we carefully select materials from all over the world.



Products

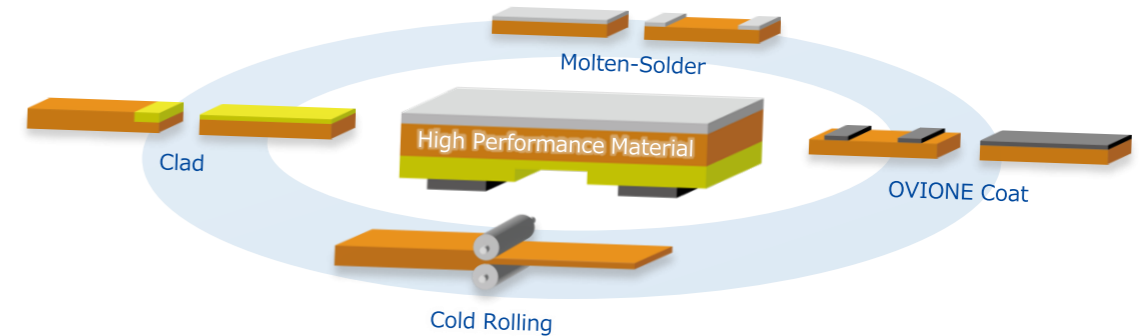
Classification	Designation	Our Material	Production		
			Japan	Taiwan	China
Stainless Steels	Stainless steel for springs	SUS301, SUS304, SUS631, SUS632J1, SUS420J2	●	○	○
	Non-magnetic stainless steels	TOKKIN™ 305M, TNM-1™	●		○
	High corrosion resistant stainless steels	SUS316, SUS316L, SUS304L	●		○
	Precipitation hardening stainless steels	SUS631, SUS632J1, TOKKIN™ 350	●		○
	Hardening stainless steels	SUS420J2, RB-S, RB-X	○		○
High Carbon Steels	Ferritic stainless steels	SUS430, FS-1	●		○
	Carbon tool steels High cleanliness steels	TE-2, SK95, SK85 M1, M1F, M2, M2F, MB-1	●	●	●
	Carbon steels	S45C, S50C	●	○	●
Low Carbon Steels	Quenched strip	SK, Blue/White quenching	△	△	△
	Cold rolled steels	SPCC	●		●
High Performance Materials	Soft magnetic irons	SUY-1	●		●
	Electromagnetic stainless steels	TDS-1, TDS-J™, nanoMAG™	●		○
	Metal foil (Under 0.10mm thickness)	Stainless steels, High carbon steels, Steels, Ni alloys, Cu alloys, Al alloys etc.	●	○	○
	nano series (Ultrafine grained metals)	nanoSUS™ 301, nanoSUS™ 304 etc	●		
	JIN series (High strength & High elongation metals)	TOKKIN™ 350 JIN™, TOKKIN™ 301 JIN™	●		
	Highly corrosion-resistant alloys, Heat-resistant alloys	HC-276, HC-22, ALLOY 625, ALLOY X750, ALLOY 718, HAYNES®*1 282	●		○
	Ni-Co-Cr Alloys	MP35N®*2, L605, ALLOY 188, COCRLOY	●		
	Electrical resistance alloys, Electrical heating alloys	CuNi based, NiCr based, CuMn based, FeCr based	●		○
	Maraging steels	MAS-1	●		
	Steels for blades	TE-2, SK95, RB-S, SUS420J2	●	●	●
Composite Metals	Clad metals	Ni/SUS/Ni, Cu/Ag, Fe/Cu, Al/Ni, Kov/Ag, Cu/SUS etc.	●		
	OVIONE™ Coat (Functional resin coated materials)	Stainless steels, Cu alloys, Ni alloys, Al alloys + Resin coat (Epoxy, Polyester, PES type)	●		
	Molten-solder plated metals	Cu alloys, Ni alloys + SnCu solder	●		●
	Multi-gauge metals	Cu alloys, NiCr alloys, FeNi alloys + Multi-gauge processing	●		
Processing Service	Combined composite materials	Clad metals + OVIONE™ + Molten solder + Multi-gauge + Plating	●		
	Re-rolling	Thickness 0.010-2.0 mm × Width 340 mm and under	●	○	○
	Slitting	Thickness 0.010-2.0 mm × Width 3.0-340 mm	●	○	○
	Edge treatment	Debarred edge, Round edge (Round, Angle)	●	○	○
	Plating	Au, Ag, Ni, Sn, Sn reflow Plating	△		

*1 HAYNES®-Registered Trademark of Haynes International Inc. *2 MP35N® - Registered Trademark of SPS Technologies, Inc.

Values and Solutions

We respond to a wide range of customer requirements through meticulous coordination.

By combing multiple technical elements, we offer "custom designs" and "special-spec materials" developed with our proprietary technologies. This allow us to provide finely tuned solutions tailored to each customer's unique requirements.

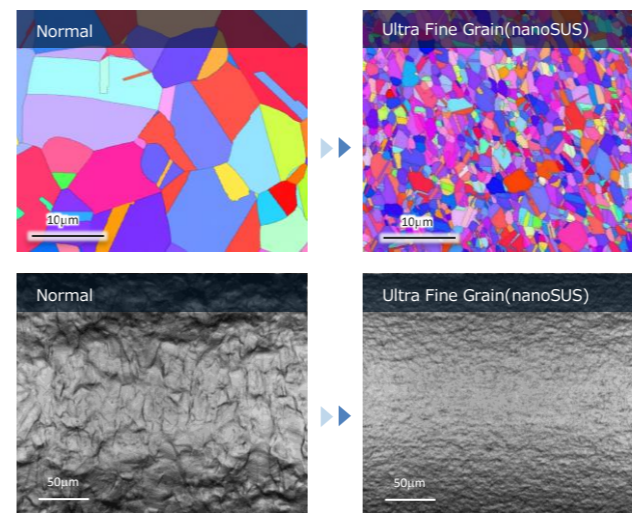


Proprietary Technology Enabled by Unique Facilities

We enhance the full potential of materials through our proprietary microstructure control and precision processing technologies.

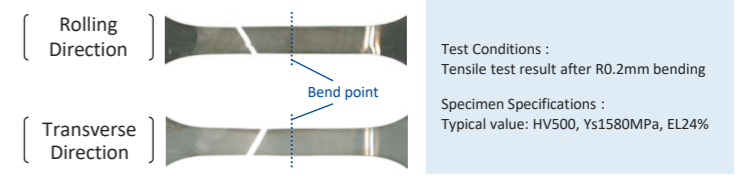
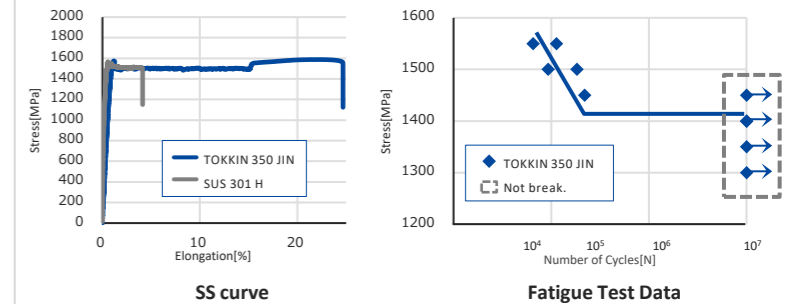
By combining core technologies of "Cold rolling" and "Heat treatment" produced by our own designed equipment, we create material properties that have never been seen before. We offer innovative solutions that address our customers' most challenging problems.

Grain Size Control Improve Rough Skin after Forming



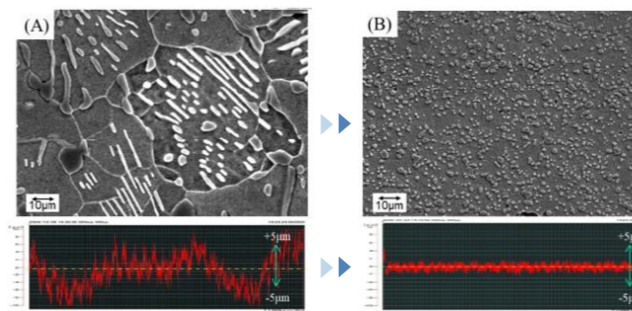
Effect of Grain Refinement on Bent Surface

Mechanical Property Adjustment Improve Processability and Reliability



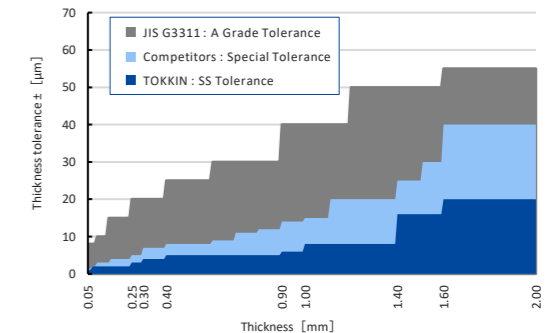
Reliability Evaluation of Working Portion by Tensile Test after Restoring Bending

Carbide Control Improve Hardenability and Stabilize Quality



Carbide Structure and Thickness Distribution Controlled by Our Processing

High-precision Thickness Contribute to Cost Reduction and Quality Enhancement

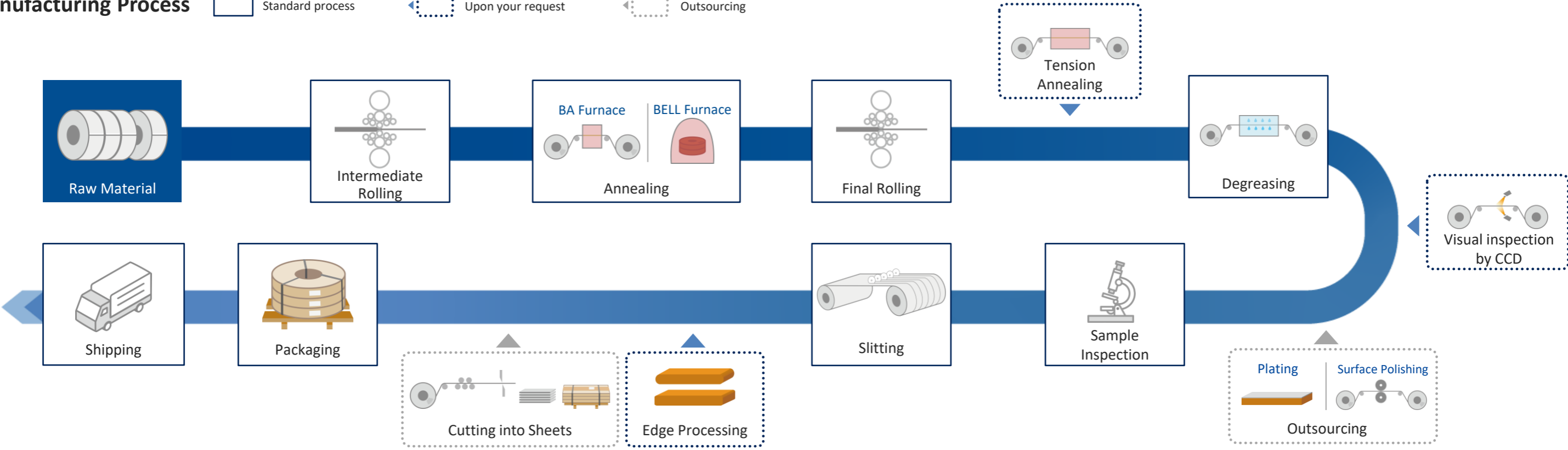


Comparison of Thickness Tolerance

Manufacturing Technology

Manufacturing Process

Standard process
 Upon your request
 Outsourcing

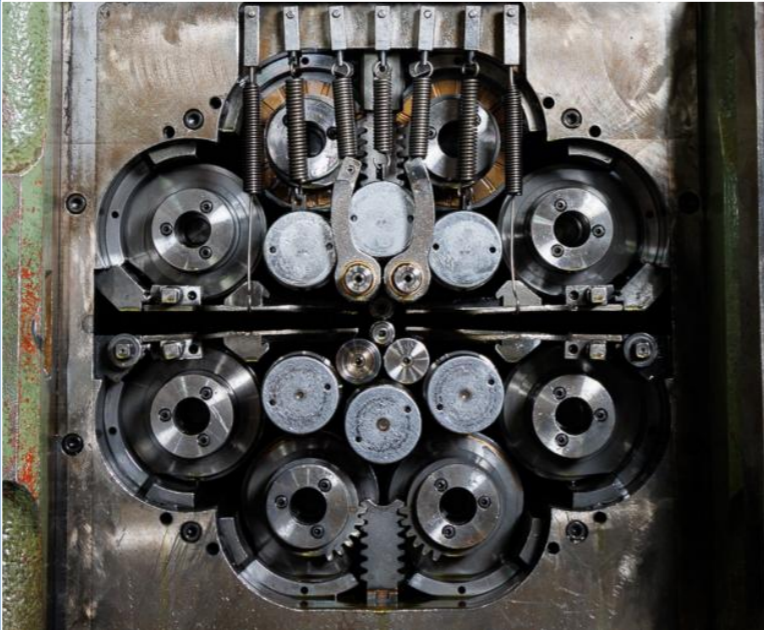
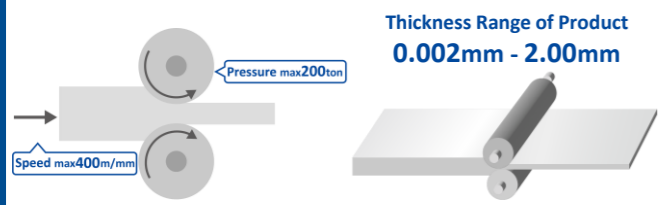


Cold Rolling

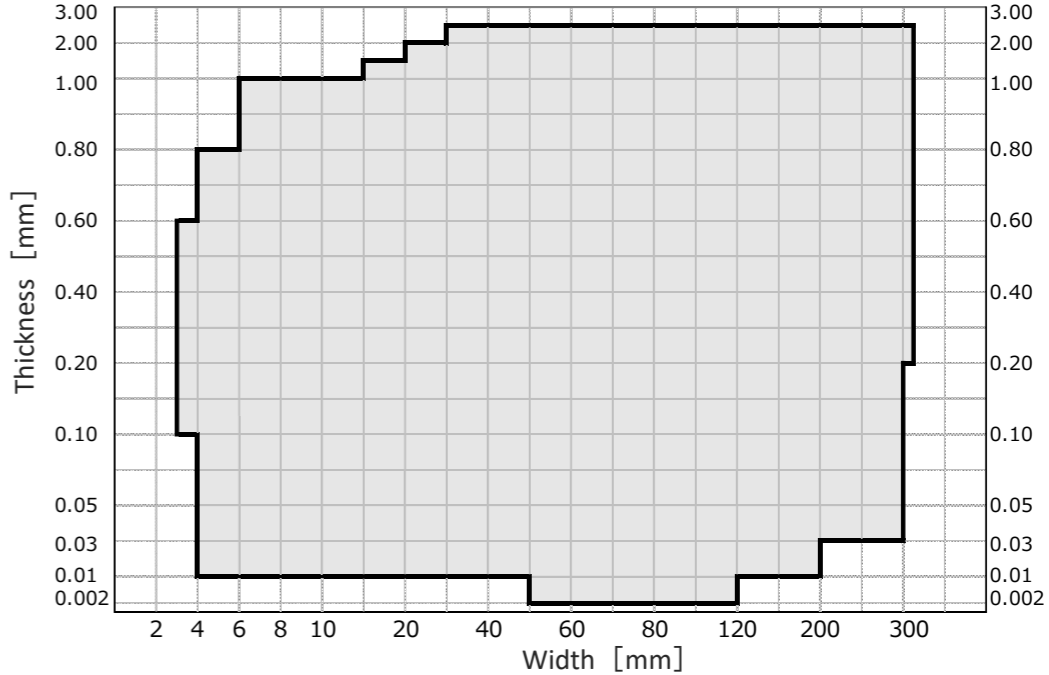
Cold rolling is one of a plastic deformation process which room-temperature material is passed between rotating rolls and stretched thinner by applying pressure at the top and bottom.

It has better thickness accuracy and uniformity than hot rolling, which rolls heated material. Since no oxide film is formed, it can be processed to thin thickness with a glossy surface finish.

In addition, the metallographic structure can be made fine and uniform, which leads to stable quality after processing into parts.



Manufacturable Range



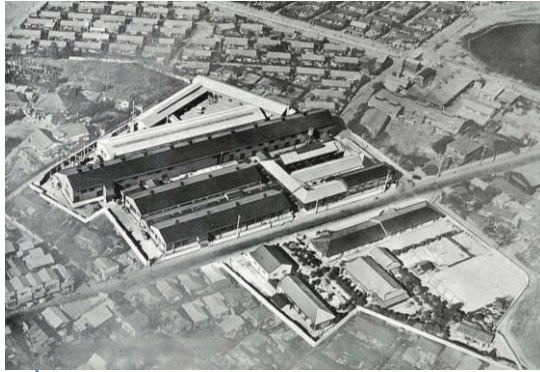
History

Aiming to be an “Excellent Company” that will last for 100 years



1940

Established TOKUSHU KINZOKU ROLLING WORKS in Itabashi



1982

Established Saitama Factory (former SAITAMA TOKUSHU KINZOKU KOGYO)



1999

Absorbed and merged the manufacturing Dept. of JCM Organized Composite Materials Department
Acquired ISO9001 certificate

2005

Hot spring business “SAYA-NO-YUDOKORO” opened



2017

TOKUSHU KINZOKU EXCEL CO., LTD. was renamed to TOKKIN HOLDINGS Corp. and Newly established TOKUSHU KINZOKU EXCEL CO., LTD.

2018

TOKKIN™ 350 JIN™ received the Technology Development Award from THE JAPAN INSTITUTE OF METALS AND MATERIALS (JIMM)



1940

1950

1980

1990

2000

2010

2020



1956

Established production technology for 10 micron-thick cold-rolled materials



1988

Established TAIWAN TOKKIN CO., LTD.



1996

Established SHANGHAI TOKKIN CO., LTD. (Started operation in 1998)



2008

Started sales innovation
Started product innovation

2004

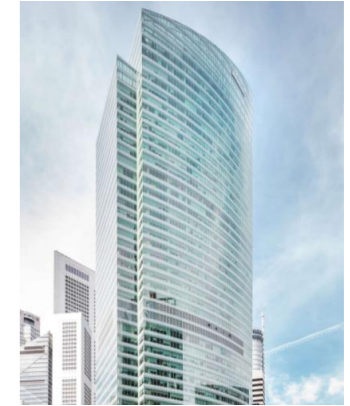
Started TOKKIN Innovation Activities

2008

TOSKUSHU KINZOKU KOGYO CO., LTD. was renamed to TOKUSHU KINZOKU EXCEL CO., LTD.

2021

Established TOKKIN SINGAPORE PTE. LTD.



Organization Growth and Development

2004

TOKKIN Innovation

Under the guidance of OJT Solutions Inc., we embraced the philosophy that “Manufacturing is about developing people,” and have worked to strength on-site capabilities and foster a positive corporate culture. Since 2015, this initiative has evolved into “Developing personnel capable of improvement,” and is now rooted throughout the organization as a voluntary improvement activity that meets customer expectations.

2008

Sales Innovation

We have transformed our sales strategies and systems to enhance performance. All sales members took the initiative to strengthen the capabilities, and the manufacturing and sales departments worked together to create value in response to market and customer needs, including by pioneering the utilization of web marketing in the industry.

Product Innovation

To supply high-performance materials to the global market, we are further enhancing TOKKIN’s core technologies and actively developing next-generation products. We develop new products that meet customer needs at an overwhelming speed, pursue the world’s best material performance and continue to challenge ourselves to create world-first technologies.

